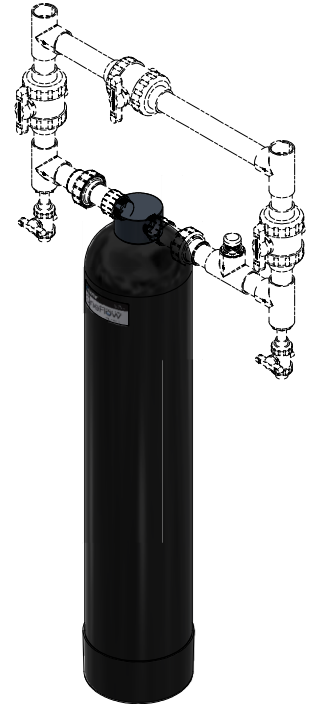
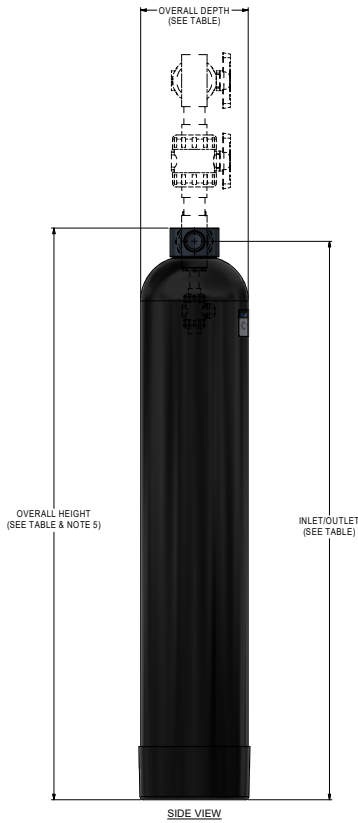
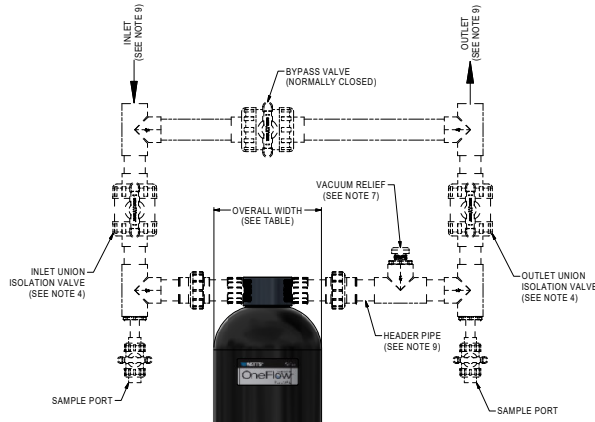
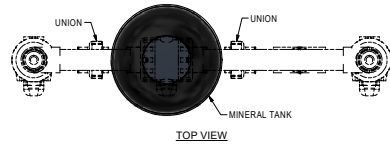


NOTES:

1. ALL DIMENSIONS SHOWN IN TABLE ARE IN INCHES, UNLESS OTHERWISE NOTED & ARE ± 1 INCH (25MM).
2. ALL ITEMS SHOWN IN PHANTOM LINE ARE TO BE PROVIDED BY OTHERS.
3. ALL DIMENSIONS ARE SUBJECT TO CHANGE WITHOUT ANY NOTICE.
4. INSTALL UNIONS FITTINGS ON INLET & OUTLET PLUMBING CONNECTIONS.
5. PROVIDE A 2 FEET MINIMUM CLEARANCE ABOVE MINERAL TANK FOR FILLING MEDIA.
6. FOR INSTALLATIONS USING METAL PLUMBING, CONNECT A METAL BONDING STRAP TO INLET & OUTLET METAL PLUMBING TO MAINTAIN ELECTRICAL CONTINUITY.
7. PROVIDED SYSTEM SHALL NOT BE SUBJECT TO ANY VACUUM. IF RISK OF VACUUM IS PRESENT, INSTALL VACUUM RELIEF VALVE WATTS ORDERING CODE # 0566031 ON OUTLET LINE.
8. THE FULL WEIGHT OF THE PIPING AND VALVES MUST BE SUPPORTED BY PIPE HANGERS OR OTHER MEANS.
9. INLET AND OUTLET HEADERS NEED TO BE SIZED ACCORDING TO FLOW RATE REQUIREMENTS BY OTHERS.
10. LIMIT INLET PRESSURE TO NOT EXCEED MAXIMUM PUBLISHED OPERATING PRESSURE.
11. USE DIELECTRIC UNIONS ON PLUMBING CONNECTIONS WHEN DISSIMILAR METALS ARE PRESENT.

MODEL OF 1260-30TM ONEFLOW ANTI-SCALE SYSTEM DIMENSIONS (INCHES) & SPECIFICATIONS													
MODEL NO.	ORDERING CODE (EDP NO.)	MINERAL TANK SIZE	INLET	OUTLET	OVERALL HEIGHT (SEE NOTE 5)	OVERALL DEPTH	OVERALL WIDTH	SYSTEM INLET/OUTLET PIPE SIZE CONN. (NPT)	PEAK SERVICE FLOW GPM	MIN/MAX OPERATING TEMP F	MIN/MAX OPERATING PRESSURE (PSI)	ESTIMATED OPERATING WEIGHT (LBS)	ESTIMATED SHIPPING WEIGHT (LBS)
OF1354-30TM	0002221	13 X 54	56.2	56.2	57.7	13.1	13.1	2.0	30.00	40/100	15/100	397.00	75.00

<b>WATTS</b>		815 CHESTNUT ST. NORTH ANDOVER, MA 01845		TITLE: GENERAL INSTALLATION MODEL OF 1260-30TM ONEFLOW ANTI-SCALE SYSTEMS		PART NO. SEE TABLE	
<small>THE ABOVE PRODUCT IS THE PROPERTY OF WATTS WATER TREATMENT SYSTEMS, INC. AND IS TO BE USED ONLY FOR THE PURPOSES INTENDED BY WATTS WATER TREATMENT SYSTEMS, INC. ANY OTHER USE IS STRICTLY PROHIBITED. WATTS WATER TREATMENT SYSTEMS, INC. IS NOT RESPONSIBLE FOR ANY DAMAGE TO PERSONS OR PROPERTY CAUSED BY THE USE OF THIS PRODUCT.</small>		<small>WATTS WATER TREATMENT SYSTEMS, INC. IS AN ISO 9001:2015 CERTIFIED COMPANY. FOR MORE INFORMATION, VISIT US AT WWW.WATTS-WATER.COM</small>		MATERIAL: N/A		EST. NO. SEE TABLE	
<small>DESIGNED BY: JPS</small> <small>CHECKED BY: RL</small>	<small>DATE: 7/7/2021</small> <small>DATE: 7/7/2021</small>	<small>SCALE: NTS</small> <small>SHEET: 1 OF 3</small>	<small>REVISIONS:</small> <small>SEE TABLE</small>	OTHER: ESTIMATED WEIGHT: SEE TABLE		<small>SIZE: D</small> <small>REV: 1</small>	<small>PLOT TYPE: CAD</small>



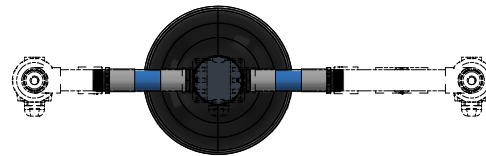
CLIENT PROJECT SIGN-OFF	
JOB NAME:	
JOB LOCATION:	
CONTRACTOR:	
CONTRACTOR APPROVAL:	
CONTRACTOR APPROVAL DATE:	
CONTRACTOR PO NO.:	
ENGINEER:	
ENGINEER APPROVAL:	
ENGINEER APPROVAL DATE:	

NOTES:

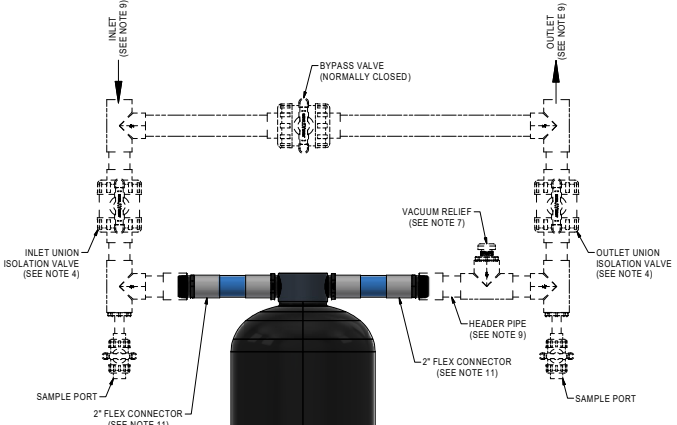
1. ALL DIMENSIONS SHOWN IN TABLE ARE IN INCHES, UNLESS OTHERWISE NOTED & ARE ± 1 INCH (25MM).
2. ALL ITEMS SHOWN IN PHANTOM LINE ARE TO BE PROVIDED BY OTHERS.
3. ALL DIMENSIONS ARE SUBJECT TO CHANGE WITHOUT ANY NOTICE.
4. INSTALL UNIONS FITTINGS ON INLET & OUTLET PLUMBING CONNECTIONS.
5. PROVIDE A 2 FEET MINIMUM CLEARANCE ABOVE MINERAL TANK FOR FILLING MEDIA.
6. FOR INSTALLATIONS USING METAL PLUMBING, CONNECT A METAL BONDING STRAP TO INLET & OUTLET METAL PLUMBING TO MAINTAIN ELECTRICAL CONTINUITY.
7. PROVIDED SYSTEM SHALL NOT BE SUBJECT TO ANY VACUUM. IF RISK OF VACUUM IS PRESENT, INSTALL VACUUM RELIEF VALVE WATTS ORDERING CODE # 0559031 ON OUTLET LINE.
8. THE FULL WEIGHT OF THE PIPING AND VALVES MUST BE SUPPORTED BY PIPE HANGERS OR OTHER MEANS.
9. INLET AND OUTLET HEADERS NEED TO BE SIZED ACCORDING TO FLOW RATE REQUIREMENTS BY OTHERS.
10. LIMIT INLET PRESSURE TO NOT EXCEED MAXIMUM PUBLISHED OPERATING PRESSURE.
11. FLEX CONNECTORS MUST BE INSTALLED HORIZONTALLY ON INLET AND OUTLET CONNECTIONS.
12. USE DIELECTRIC UNIONS ON PLUMBING CONNECTIONS WHEN DISSIMILAR METALS ARE PRESENT.

MODELS OF 1465-50TM, OF1665-75TM ONEFLOW ANTI-SCALE SYSTEM DIMENSIONS (INCHES) & SPECIFICATIONS													
MODEL NO.	ORDERING CODE (EDP NO.)	MINERAL TANK SIZE	INLET	OUTLET	OVERALL HEIGHT (SEE NOTE 5)	OVERALL DEPTH	OVERALL WIDTH	SYSTEM INLET/OUTLET PIPE SIZE CONN. (NPT)	PEAK SERVICE FLOW GPM	MIN/MAX OPERATING TEMP F	MIN/MAX OPERATING PRESSURE (PSI)	ESTIMATED OPERATING WEIGHT (LBS)	ESTIMATED SHIPPING WEIGHT (LBS)
OF1465-50TM	7100661	14 X 65	67.3	67.3	68.8	14.2	14.2	2.0	50.00	40/100	15/100	442.00	97.50
OF1665-75TM	7100662	16 X 65	67.3	67.3	68.8	16.2	16.2	2.0	75.00	40/100	15/100	521.00	119.75

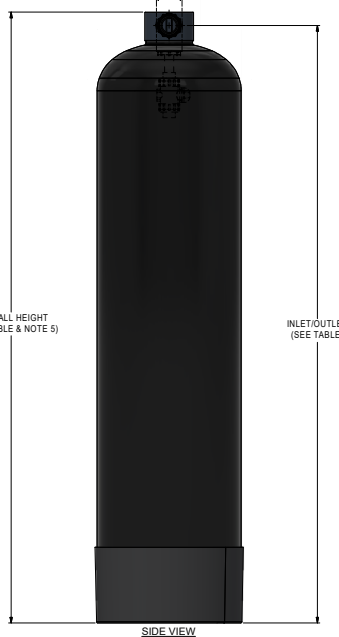
<b>WATTS</b>		815 CHESTNUT ST. NORTH ANDOVER, MA 01845		TITLE: GENERAL INSTALLATION, MODELS OF 1465-50TM, OF1665-75TM ONEFLOW ANTI-SCALE SYSTEMS		PART NO.: SEE TABLE	
DRAWN BY: JPS		DATE: 7/7/2021		SCALE: N/A		REV: D 1	
CHECKED BY: RL		DATE: 7/7/2021		SHEET NO.: 2 OF 3		MATERIAL: N/A	
				SUPERSEDED: SEE TABLE		ESTIMATED WEIGHT: SEE TABLE	



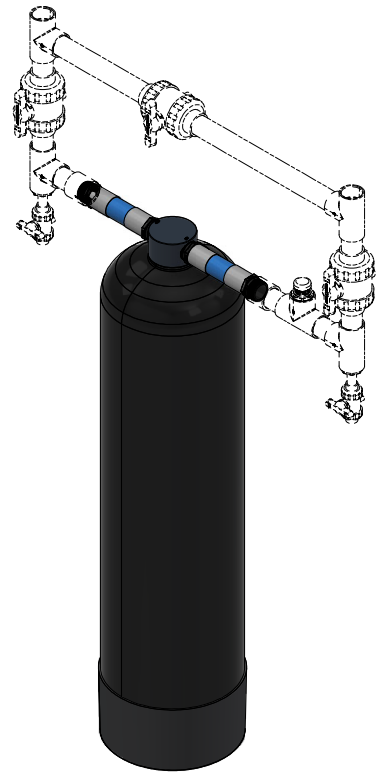
TOP VIEW



FRONT VIEW



SIDE VIEW



ISOMETRIC VIEW

CLIENT PROJECT SIGN-OFF	
JOB NAME:	
JOB LOCATION:	
CONTRACTOR:	
CONTRACTOR APPROVAL:	
CONTRACTOR APPROVAL DATE:	
CONTRACTOR PO NO.:	
ENGINEER:	
ENGINEER APPROVAL:	
ENGINEER APPROVAL DATE:	

<b>WATTS</b>		815 CHESTNUT ST. NORTH ANDOVER, MA 01845	TITLE: GENERAL INSTALLATION MODELS OF 1405-607M OF 1665-757M ONEFLOW ANTI-SCALE SYSTEMS	PART NO. SEE TABLE
<small>THE ABOVE INFORMATION IS THE PROPERTY OF WATTS WATER SYSTEMS, INC. AND IS TO BE USED ONLY FOR THE PROJECT AND SITE SPECIFICALLY IDENTIFIED IN THIS DOCUMENT. ANY REUSE OR REPRODUCTION OF THIS INFORMATION WITHOUT THE WRITTEN PERMISSION OF WATTS WATER SYSTEMS, INC. IS STRICTLY PROHIBITED.</small>		<small>DATE: 7/7/2021</small> <small>SCALE: NTS</small> <small>SHEET: 3 OF 3</small>	<small>MATERIAL: N/A</small> <small>OTHER: ESTIMATED WEIGHT: SEE TABLE (SHT. 2)</small>	<small>EST. NO. SEE TABLE</small> <small>REV. D 1</small>
DWG BY: JPS	DATE: 7/7/2021	SCALE: NTS	REVISIONS: SEE TABLE	REV: 1
CHKD BY: RL	DATE: 7/7/2021	SHEET: 3 OF 3	SEE TABLE	REV: CAD



ISOMETRIC VIEW  
MULTI-TANK SYSTEM